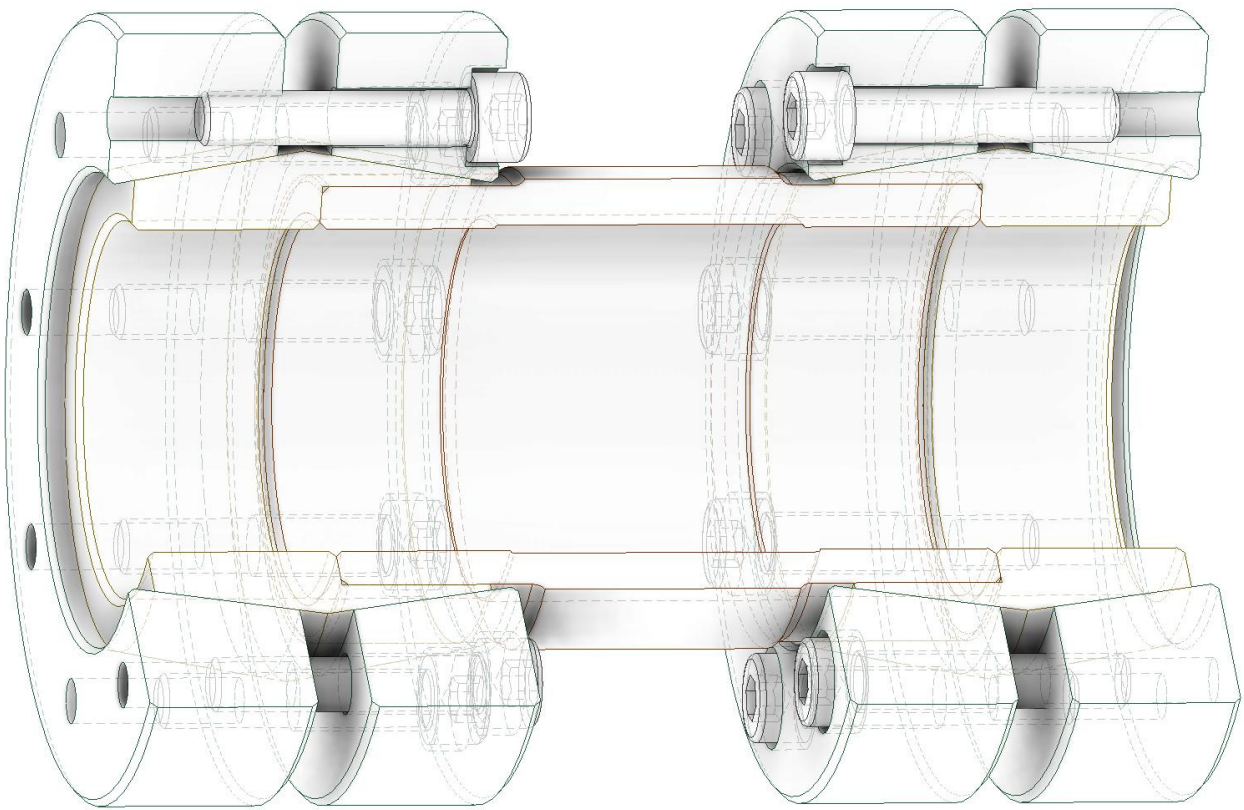


DOBIKON 4019
Installation Manual



Only available from BIKON-Technik GmbH • 41468 Neuss • Germany

A development of BIKON-Technik GmbH - introduction on global market in year 1985

Index:

We reserve all rights with regard to this technical data and its content. Without our prior written approval it is not allowed to duplicate this technical data or parts of it, nor to grant access to it by third parties or to exploit it otherwise (including extracts) without authority.

All topics and specification dealt with are only valid for original „BIKON“ or „DOBIKON“ products.

We will not accept any liability for damages arising from misinterpretation, application or constructional flaws (regarding equipment wherein our products shall be installed). All information is based upon our knowledge of the current state of the art at the draft date of this technical data.

We refer to our trademark and further intellectual property rights as well as our conditions of sale that shall apply.

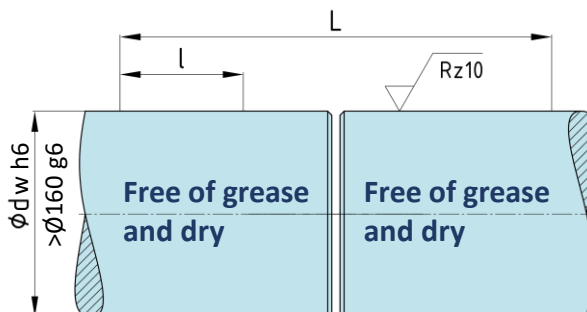
April 2023



BIKON-Technik GmbH

Hansemannstrasse 11 · 41468 Neuss · Germany
Tel. ++49 (0) 2131-71889-0 · www.bikon.de · E-Mail: info@bikon.de

Space - DOBIKON 4019



dW	d	D	l	L
mm	mm	mm	mm	mm
45	55	100	50	162
50	62	110	50	162
55	68	115	50	162
60	75	130	50	162
65	80	145	50	162
70	90	155	60	172
75	100	170	60	172
75	110	170	70	225
80	110	170	70	225
85	110	170	70	225
85	125	195	80	250
90	125	195	80	250
95	125	195	80	250
100	140	215	80	250
105	140	215	80	250

dW	d	D	l	L
mm	mm	mm	mm	mm
110	155	230	90	270
120	155	230	90	270
130	185	285	112	360
135	185	285	112	360
140	185	285	112	360
150	200	310	125	400
155	200	310	125	400
160	220	330	144	450
170	220	330	144	450
180	240	370	144	450
190	240	370	144	450
190	260	400	160	490
200	260	400	160	490
210	280	425	180	540
220	280	425	180	540

dW	d	D	l	L
mm	mm	mm	mm	mm
230	280	425	180	540
220	300	450	200	610
230	300	450	200	610
240	300	450	200	610
250	340	510	210	640
260	340	510	210	640
270	340	510	210	640
280	360	550	240	720
290	360	550	240	720
300	390	590	250	740
310	390	590	250	740
320	420	630	280	620
330	420	630	280	620
340	420	630	280	620

TA – Tightening torque of screws

dW	d	M	TA
mm		-	Nm
45	55	M8	41
50	62	M8	41
55	68	M8	41
60	75	M8	41
65	80	M8	41
70	90	M8	41
75	100	M8	41
75	110	M10	83
80	110	M10	83
85	110	M10	83
85	125	M12	145
90	125	M12	145
95	125	M12	145
100	140	M12	145
105	140	M12	145

dW	d	M	TA
mm		-	Nm
110	155	M12	145
120	155	M12	145
130	185	M16	355
135	185	M16	355
140	185	M16	355
150	200	M16	355
155	200	M16	355
160	220	M16	355
170	220	M16	355
180	240	M20	690
190	240	M20	690
190	260	M20	690
200	260	M20	690
210	280	M20	690
220	280	M20	690

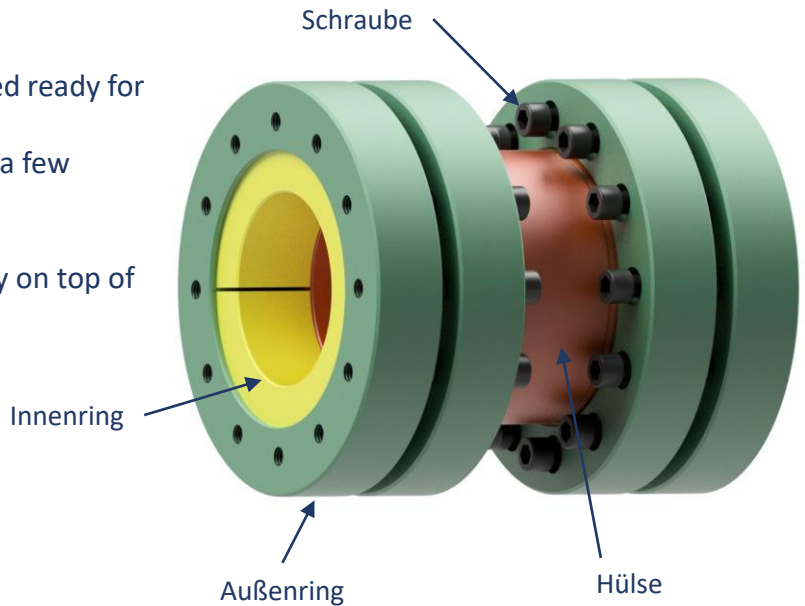
dW	d	M	TA
mm		-	Nm
230	280	M20	690
220	300	M20	690
230	300	M20	690
240	300	M20	690
250	340	M24	1 200
260	340	M24	1 200
270	340	M24	1 200
280	360	M24	1 200
290	360	M24	1 200
300	390	M24	1 200
310	390	M24	1 200
320	420	M24	1 200
330	420	M24	1 200
340	420	M24	1 200

Installation

1.

BIKON shaft couplings are delivered ready for installation and oiled.
The screws have been unscrewed a few threads.

Make sure that the rings fit loosely on top of each other.

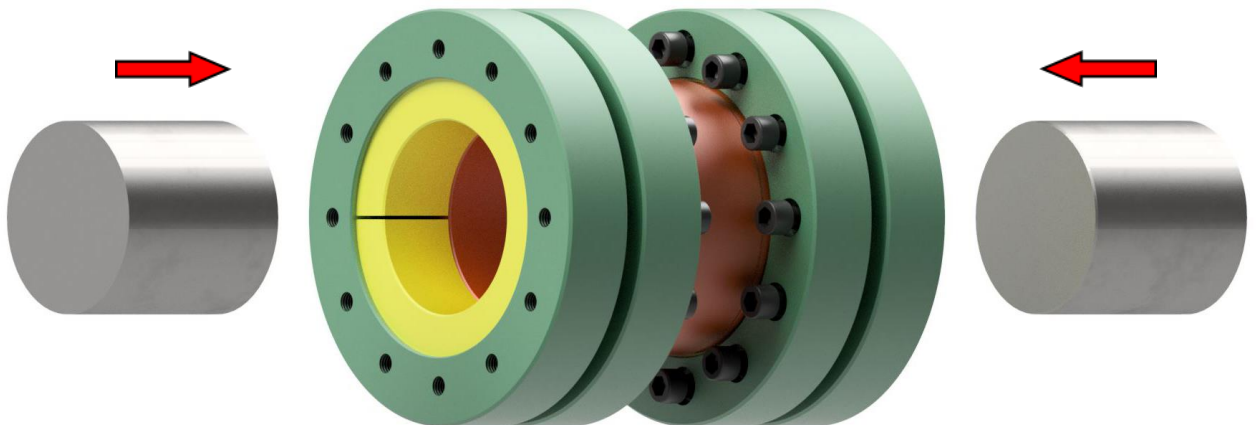


2.

Before pushing on the complete shaft coupling or individual halves, degrease the shaft ends, faces of the flanges and bore of the shaft coupling.

Oil the cones and screws.

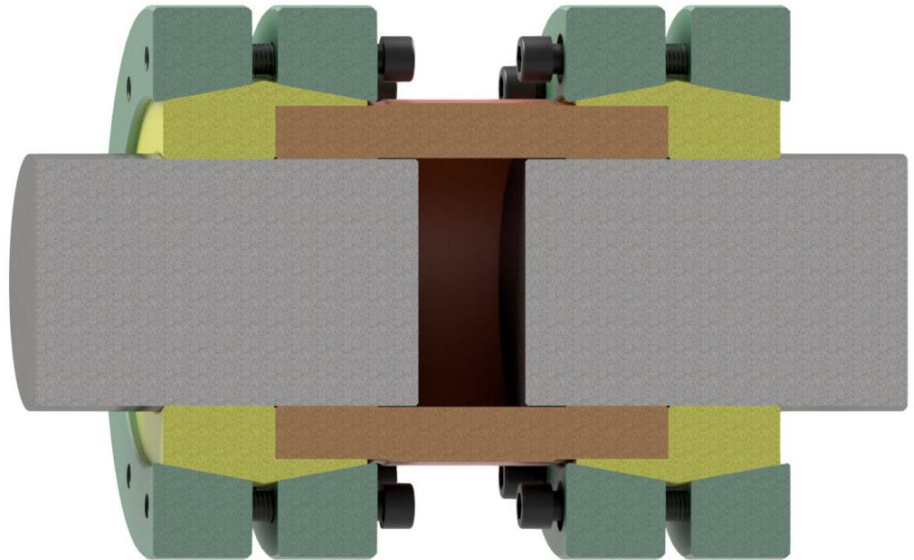
Do not use molybdenum disulfide (MoS₂), assembly paste or grease!



Installation

3.

Make sure the shaft coupler is centered on the shaft ends.



4.

Tighten the screws evenly one after the other using a torque wrench (not crosswise).

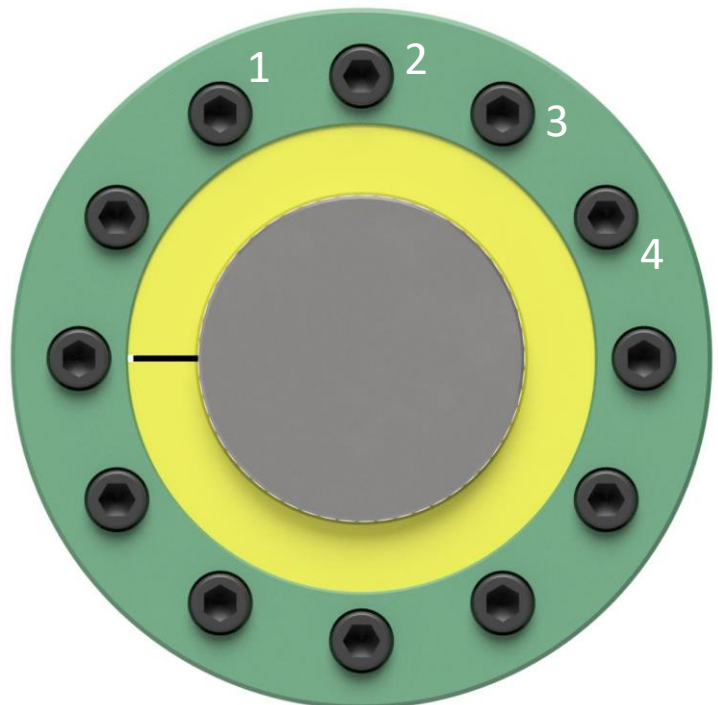
Pay attention to parallel outer rings, avoid tilt. A tightening angle of 30° - 60° has proven practical.

control !

The tightening of the screws and the assembly is complete when no more screws can be tightened with the 100% tightening torque.

Attention !

Do not clamp a shrink disk without an installed shaft, otherwise plastic deformation of the hub is possible.

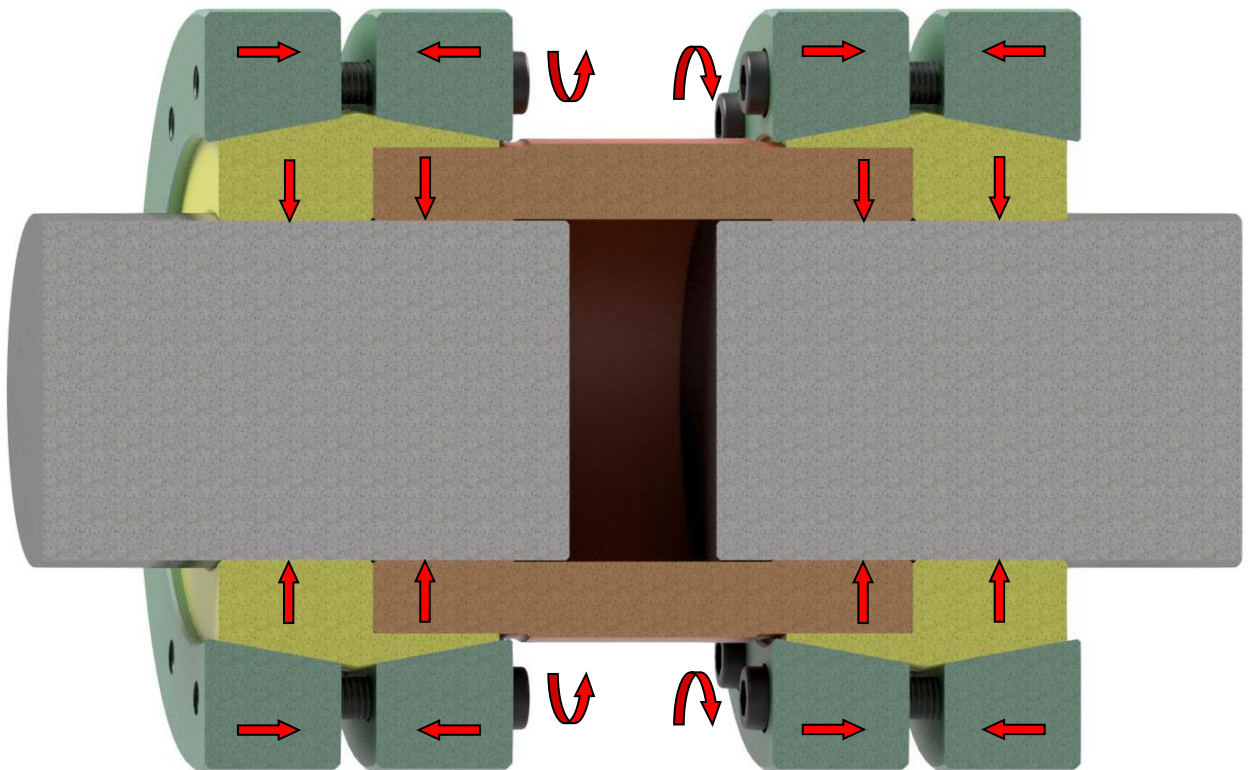


Installation

5.

By tightening the screws, the outer rings slides and tightens the connection. The cones are not self-locking

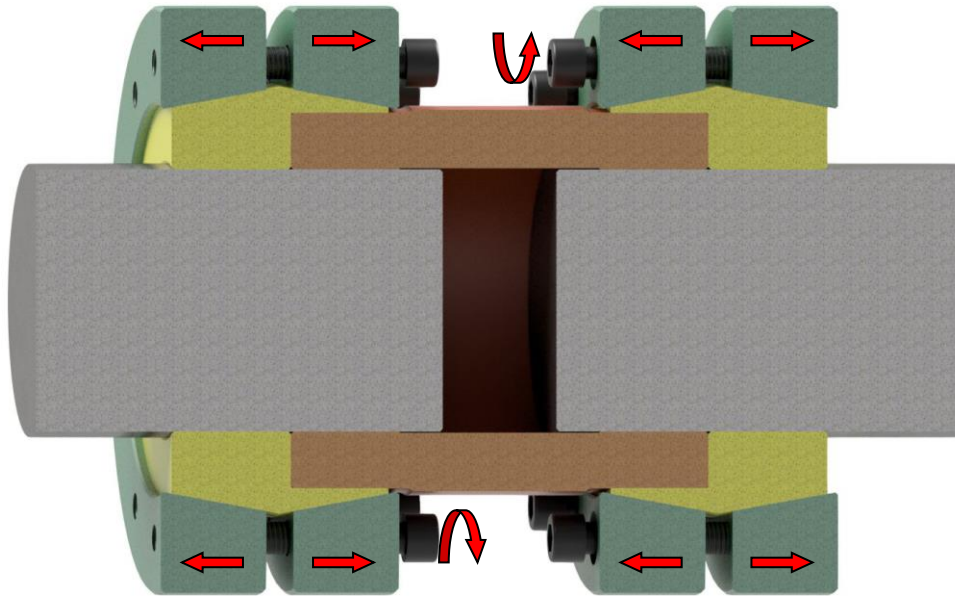
The hub does not move in the axial direction during assembly.



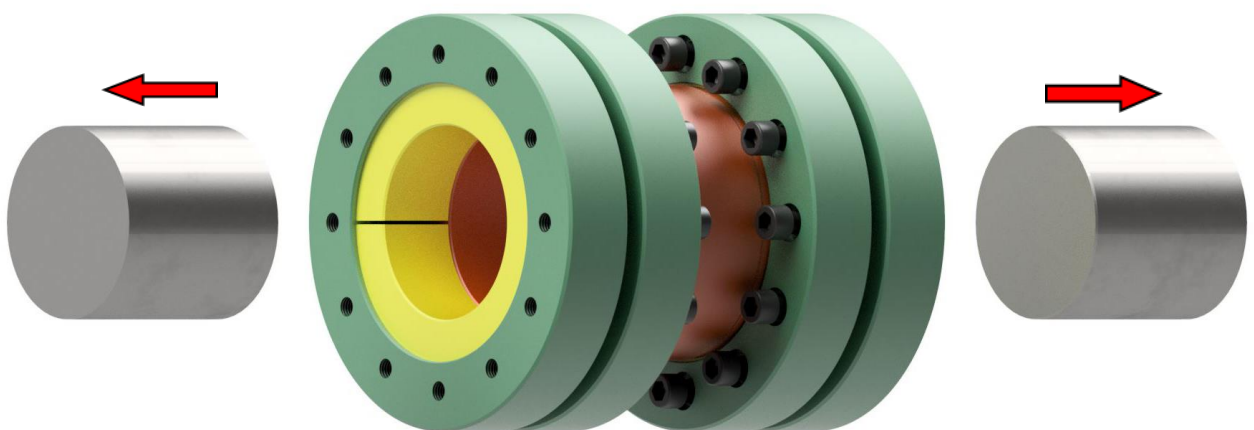
The shaft coupling is maintenance-free.

Removal

1. Loosen all screws evenly one after the other. Several turns are necessary until all screws are loosened. Do not unscrew the screws completely. The cones are not self-locking and loosen when the screws are released.



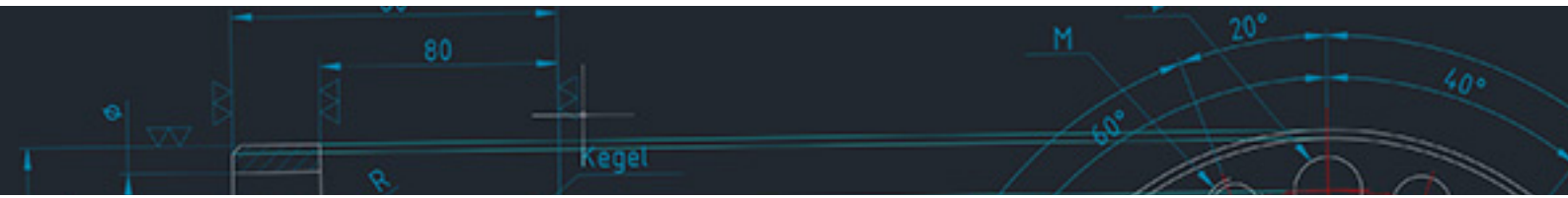
2. Remove the shaft coupling from the shaft ends.



Reusability

Undamaged locking assemblies can be reused.

The screws must be changed after each use!



BIKON-Technik GmbH

Hansemannstrasse 11

41468 Neuss • Germany

Tel. ++49 (0) 2131-71889-0

www.bikon.de

E-Mail info@bikon.de