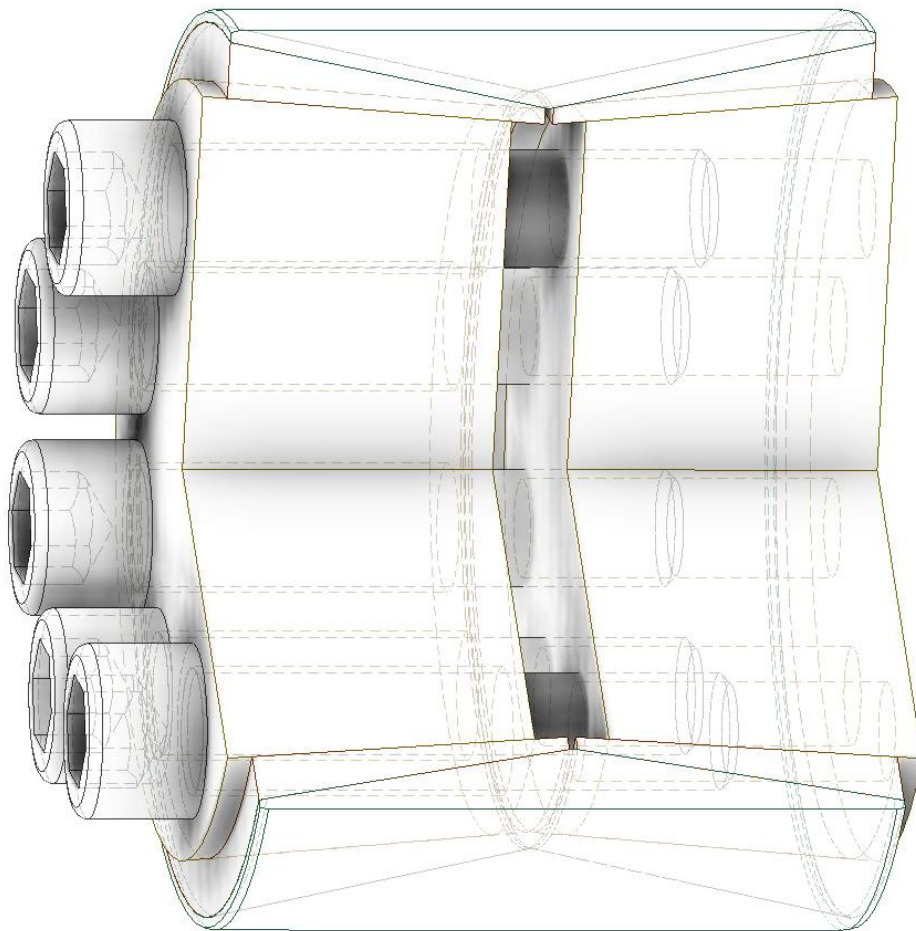


DOBIKON 2000
Installation Manual



Only available from BIKON-Technik GmbH • 41468 Neuss • Germany

A development of BIKON-Technik GmbH - introduction on global market in year 1977

Index:

We reserve all rights with regard to this technical data and its content. Without our prior written approval it is not allowed to duplicate this technical data or parts of it, nor to grant access to it by third parties or to exploit it otherwise (including extracts) without authority.

All topics and specification dealt with are only valid for original „BIKON“ or „DOBIKON“ products.

We will not accept any liability for damages arising from misinterpretation, application or constructional flaws (regarding equipment wherein our products shall be installed). All information is based upon our knowledge of the current state of the art at the draft date of this technical data.

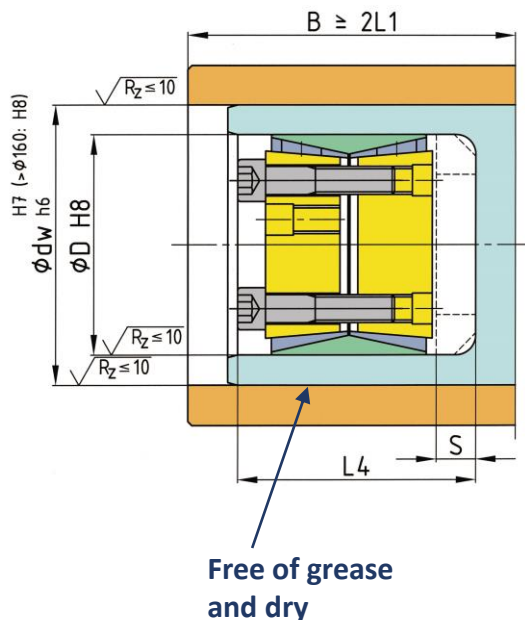
We refer to our trademark and further intellectual property rights as well as our conditions of sale that shall apply.

May 2023



BIKON-Technik GmbH

Hansemannstrasse 11 · 41468 Neuss · Germany
Tel. ++49 (0) 2131-71889-0 · www.bikon.de · E-Mail: info@bikon.de



Space - DOBIKON 2000

D	dw	L1	L4	S
mm	mm	mm	mm	mm
80	95	64	96	15
80	100	64	96	15
95	110	64	96	15
95	120	64	96	15
110	130	78	118	20
110	140	78	118	20
130	150	78	118	20
130	160	78	118	20
145	170	100	144	20
145	180	100	144	20
160	190	100	144	20
160	200	100	144	20
180	210	116	171	25
180	220	116	171	25
200	230	116	171	25

D	dw	L1	L4	S
mm	mm	mm	mm	mm
200	240	116	171	25
220	250	146	213	30
220	260	146	213	30
250	285	146	213	30
250	305	146	213	30
280	320	146	213	30
280	340	146	213	30
310	360	146	213	35
310	380	146	213	35
350	400	172	254	35
350	420	172	254	35
390	440	172	254	35
390	460	172	254	35
440	500	172	254	35
440	520	172	254	35

TA – Tightening torque of screws

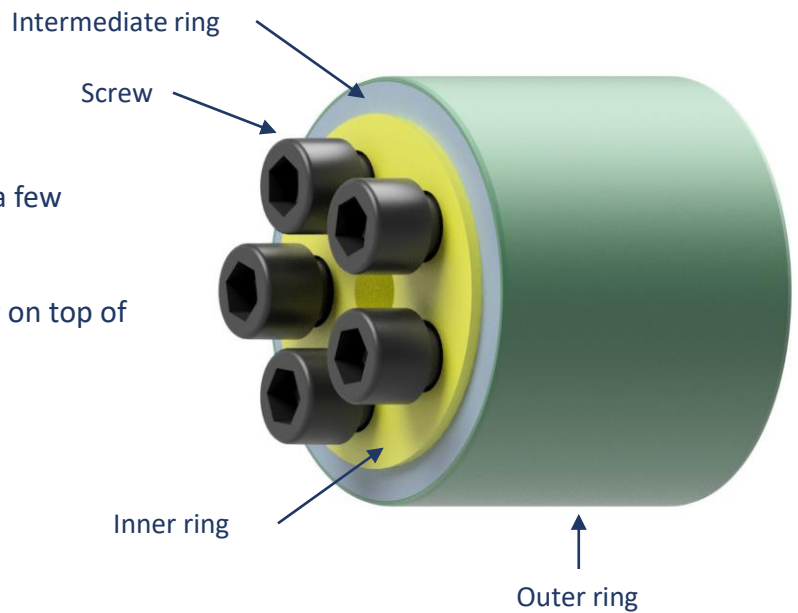
D	dw	M	TA
mm	mm	-	Nm
80	95	M12	125
80	100	M12	125
95	110	M12	125
95	120	M12	125
110	130	M14	190
110	140	M14	190
130	150	M14	190
130	160	M14	190
145	170	M16	295
145	180	M16	295
160	190	M16	295
160	200	M16	295
180	210	M20	580
180	220	M20	580
200	230	M20	580

D	dw	M	TA
mm	mm	-	Nm
200	240	M20	580
220	250	M24	1 000
220	260	M24	1 000
250	285	M24	1 000
250	305	M24	1 000
280	320	M24	1 000
280	340	M24	1 000
310	360	M24	1 000
310	380	M24	1 000
350	400	M24	1 000
350	420	M24	1 000
390	440	M24	1 000
390	460	M24	1 000
440	500	M24	1 000
440	520	M24	1 000

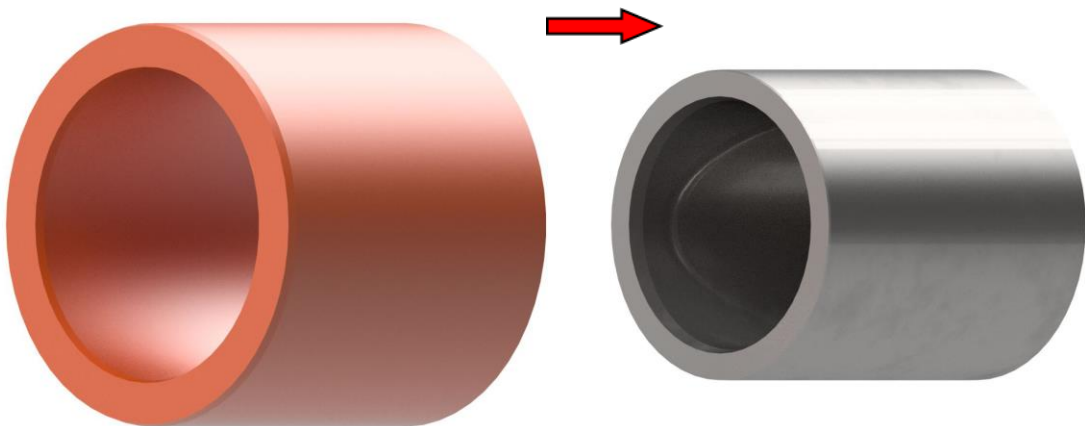
Installation

1. BIKON locking bolts are delivered Ready for installation and oiled. The screws have been unscrewed a few threads.

Make sure that the rings fit loosely on top of each other



2. Join the shaft and inner bore of the hub dry and free of grease.

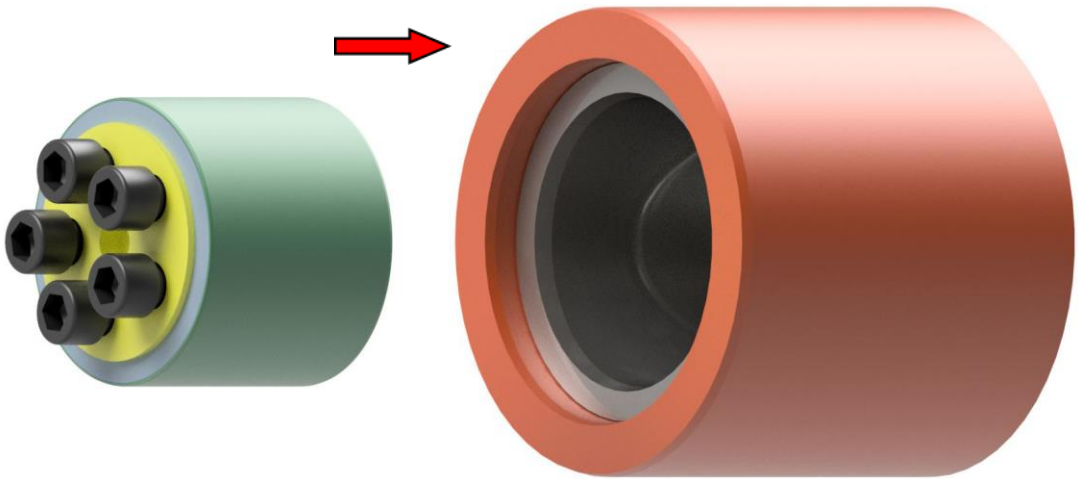
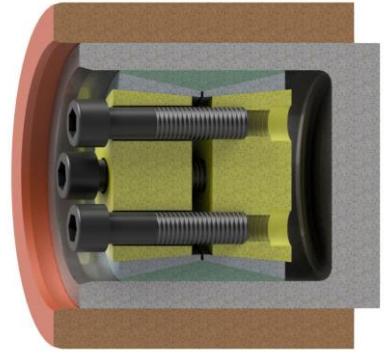


Installation

3. Slide the locking bolt (oiled) into the shaft.

Do not use molybdenum disulfide (MoS₂), assembly paste or grease!

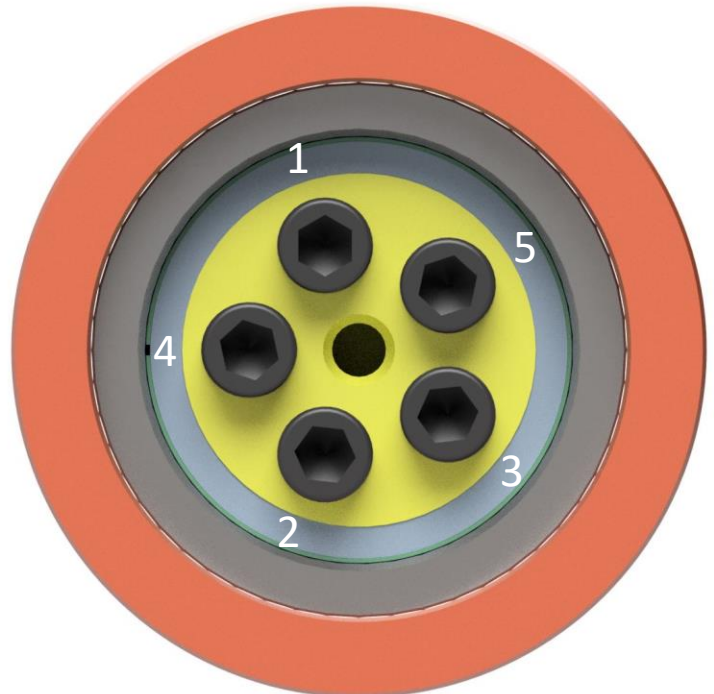
Note the distance "S" (see installation space, page 2).



4. Tighten the screws evenly crosswise and in several stages using a torque wrench.

control !

The tightening of the screws and the assembly is complete when no more screws can be tightened with the 100% tightening torque.

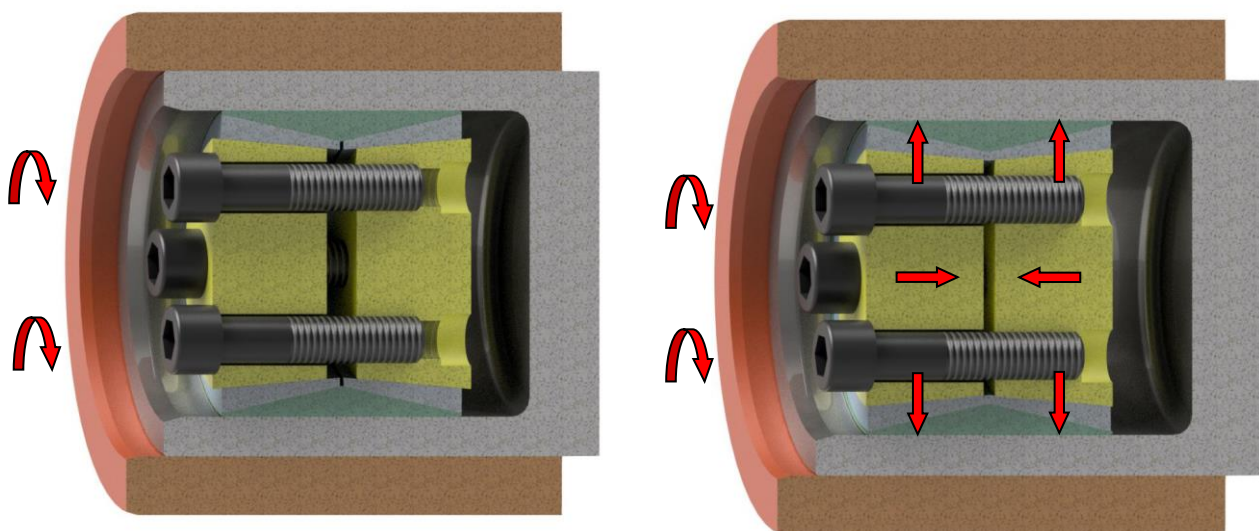


Installation

5.

By tightening the screws, the inner rings slides and tightens the connection

The hub does not move in the axial direction during assembly.

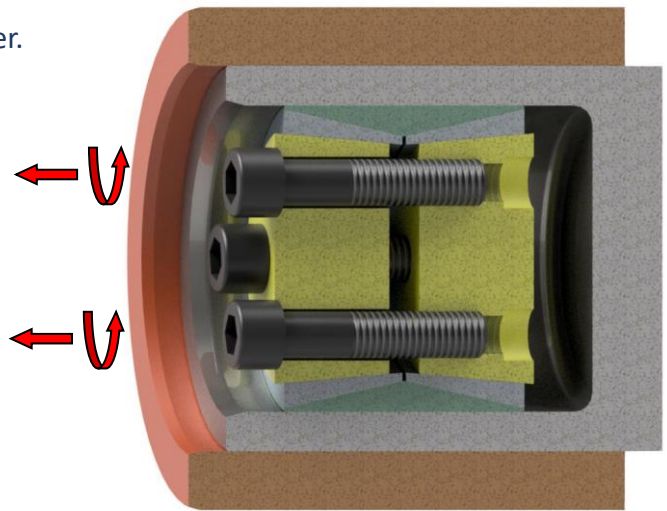


The locking bolt is maintenance-free and the screws do not have to be tightened after a certain period of operation.

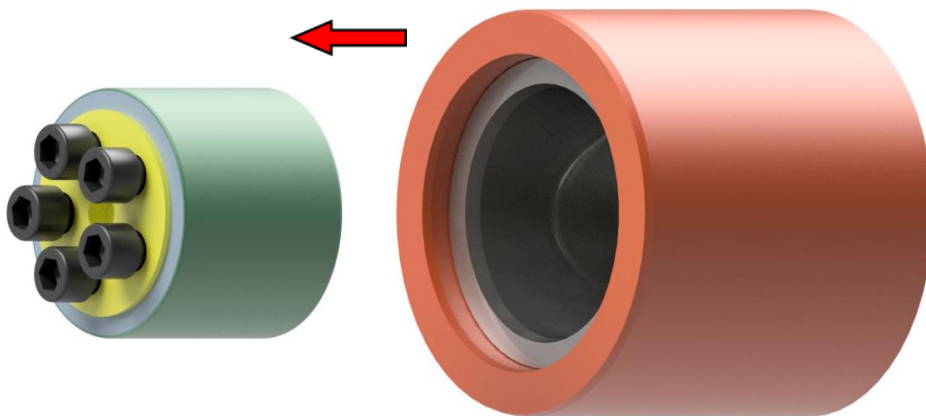
Removal

1. Loosen all screws evenly one after the other. Several turns are necessary until all screws are loosened. Do not unscrew the screws completely.

The cones are not self-locking and loosen when the screws are released.



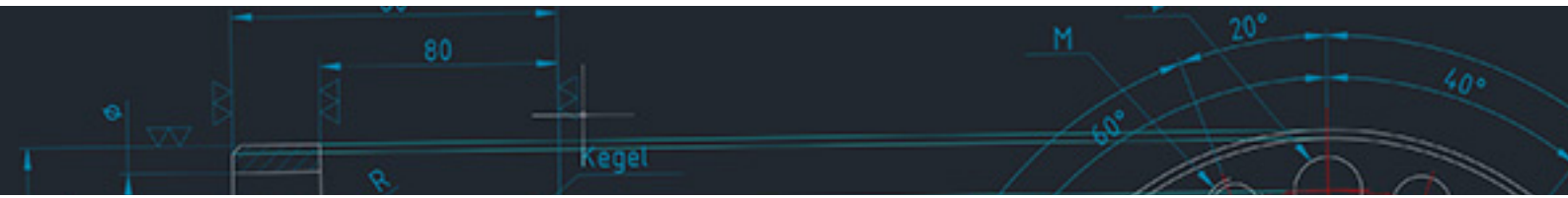
2. Remove the locking bolt from the shaft and the hub from the shaft.



Reusability

Undamaged locking bolts can be reused.

The screws must be changed after each use!



BIKON-Technik GmbH

Hansemannstrasse 11

41468 Neuss • Germany

Tel. ++49 (0) 2131-71889-0

www.bikon.de

E-Mail info@bikon.de