

Index:

We reserve all rights with regard to this technical data and its content. Without our prior written approval it is not allowed to duplicate this technical data or parts of it, nor to grant access to it by third parties or to exploit it otherwise (including extracts) without authority.

All topics and specification dealt with are only valid for original „BIKON“ or „DOBIKON“ products.

We will not accept any liability for damages arising from misinterpretation, application or constructional flaws (regarding equipment wherein our products shall be installed). All information is based upon our knowledge of the current state of the art at the draft date of this technical data.

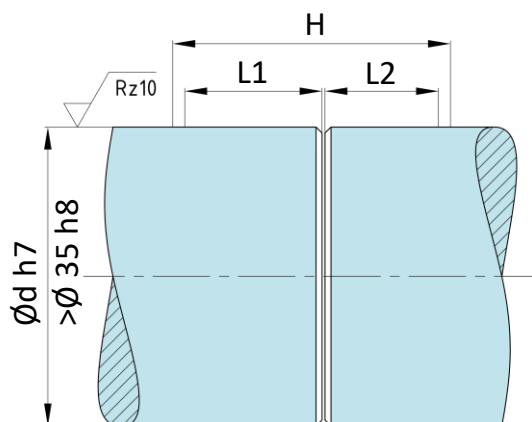
We refer to our trademark and further intellectual property rights as well as our conditions of sale that shall apply.

April 2023

BIKON 7030

Shafts with keyways

BIKON shaft couplings can be tightened over keyways (according to DIN) on shafts. The function of the shaft couplings is not affected.



Free of grease
and dry

Space - BIKON 7030

d	H	L1	L2
mm	mm	mm	mm
18	36	18	13
19	36	18	13
20	36	18	13
22	44	21	16
24	44	21	16
25	44	21	16
28	46	23	18
30	46	23	18
32	50	26	19
35	50	26	19
38	57	29	22
40	57	29	22
42	57	29	22
45	57	29	22

d	H	L1	L2
mm	mm	mm	mm
50	57	29	22
55	67	33	27
60	67	33	27
65	67	33	27
70	68	34	27
75	68	34	27
80	68	34	27
85	83	41	33
90	83	41	33
95	93	46	38
100	93	46	38
110	108	53	44
120	118	58	49

TA – Tightening torque of screws

d	M	TA
mm	-	Nm
18	M5	7
19	M5	7
20	M5	7
22	M5	7
24	M5	7
25	M5	7
28	M5	7
30	M5	7
32	M6	17
35	M6	17
38	M6	17
40	M6	17
42	M6	17
45	M6	17

d	M	TA
mm	-	Nm
50	M6	17
55	M6	17
60	M8	41
65	M8	41
70	M8	41
75	M8	41
80	M8	41
85	M10	83
90	M10	83
95	M10	83
100	M10	83
110	M12	145
120	M12	145

Installation

1.

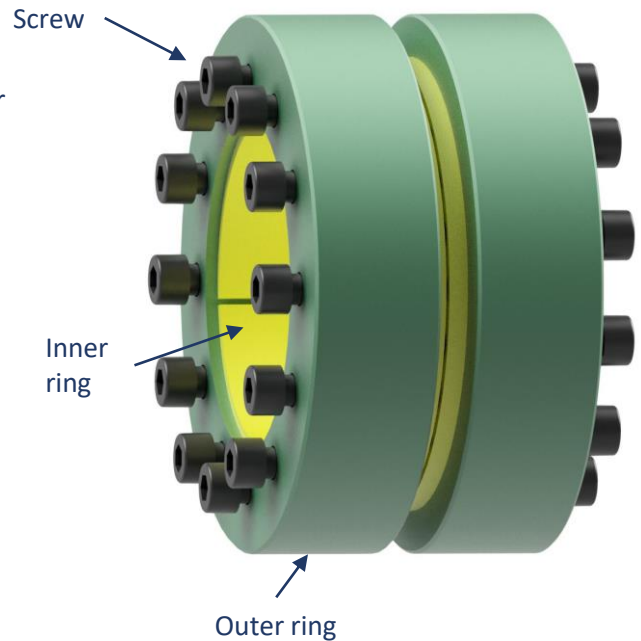
BIKON shaft couplings are delivered ready for installation and oiled.

The screws have been unscrewed a few threads.

The BIKON 7030 shaft coupling can be pushed onto the shaft ends as a whole or in halves.

Make sure that the rings fit loosely on top of each other (self-locking cone).

BIKON 7010 + BIKON 7020

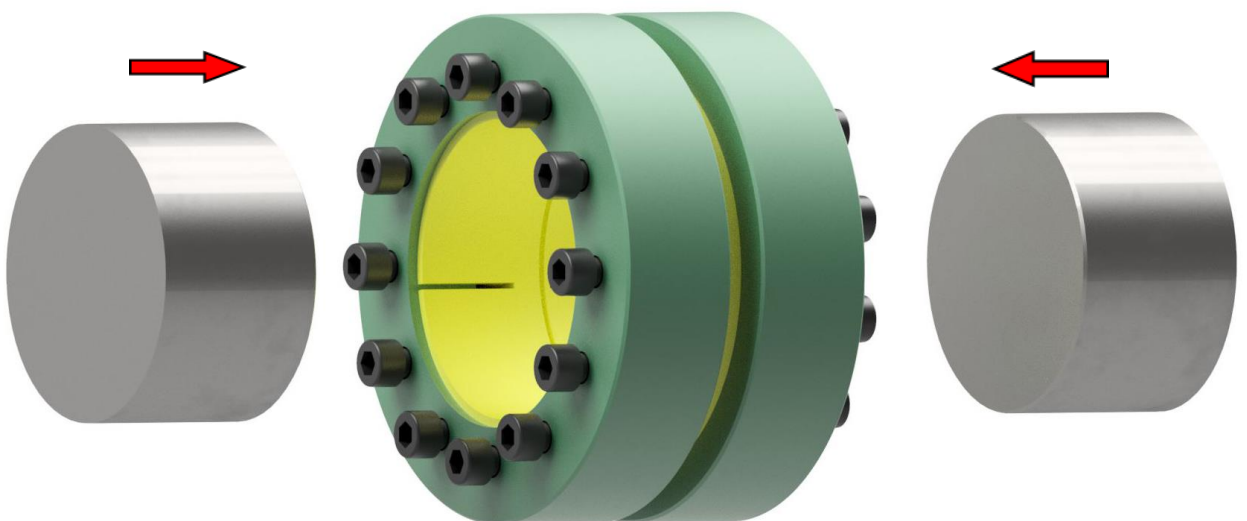


2.

Before pushing on the complete shaft coupling or individual halves, degrease the shaft ends, faces of the flanges and bore of the shaft coupling.

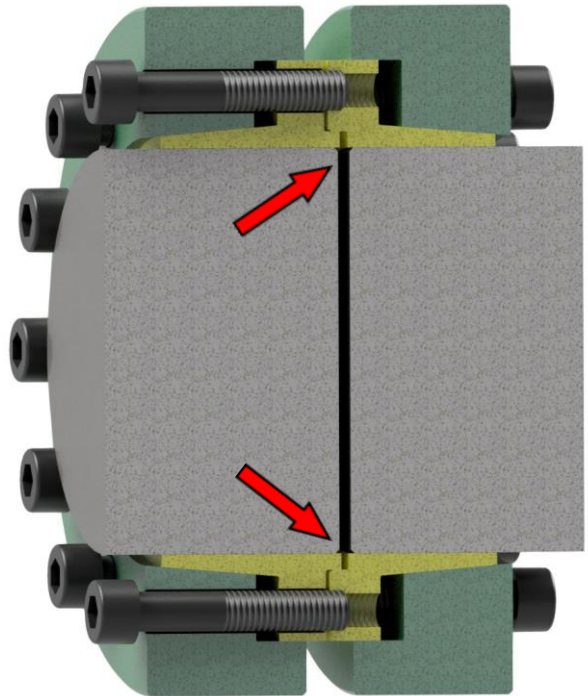
Oil the cones and screws.

Do not use molybdenum disulfide (MoS₂), assembly paste or grease!



Installation

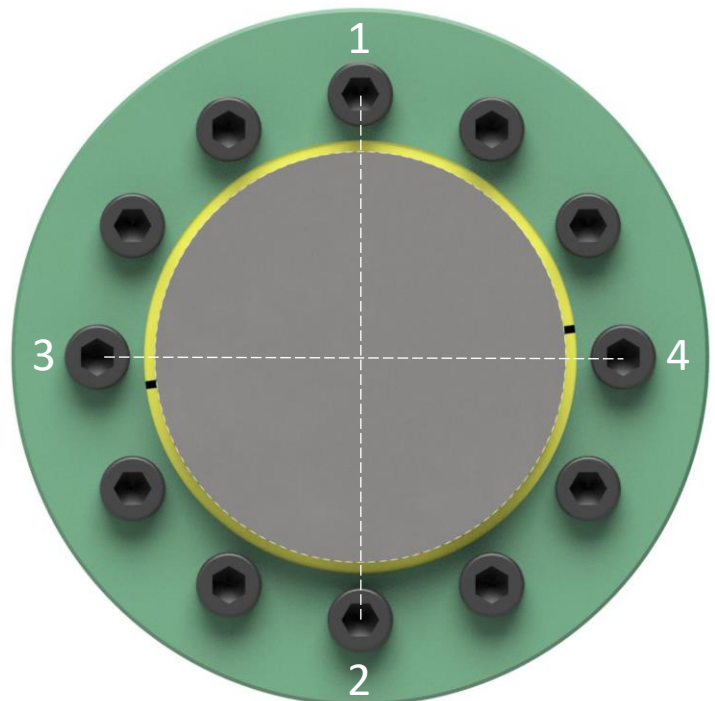
3. Make sure the shaft coupling is centered on the shaft ends.



4. Tighten the screws evenly crosswise and in several stages using a torque wrench.

control !

The tightening of the screws and the assembly is complete when no more screws can be tightened with the 100% tightening torque.

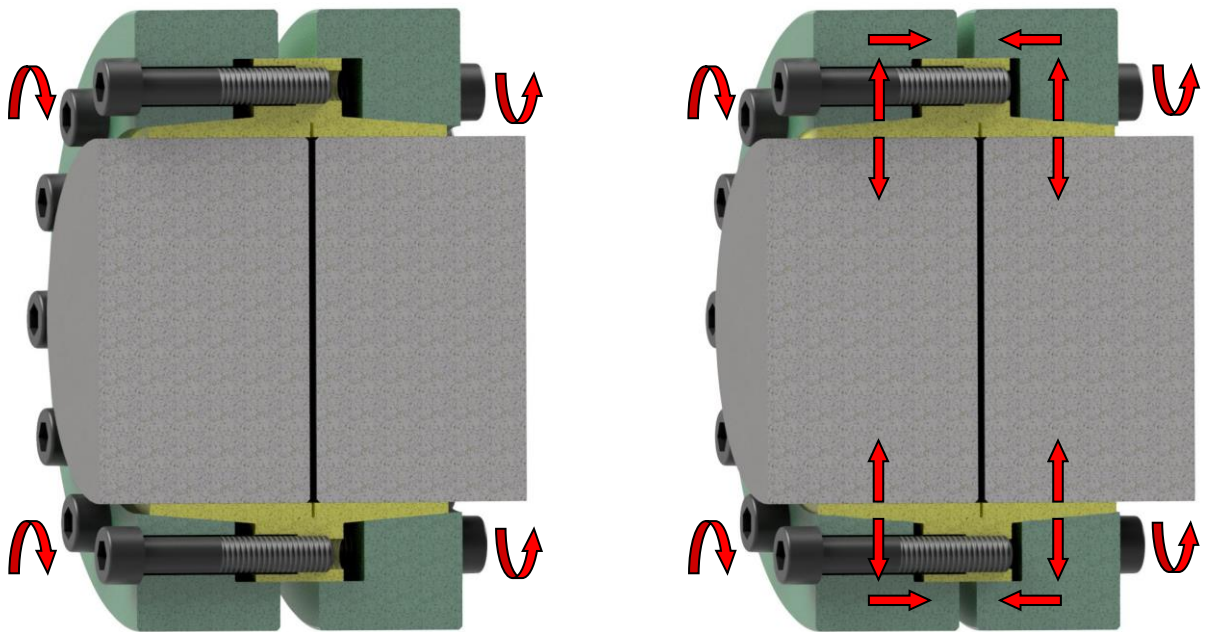


Installation

5.

By tightening the screws, the outer rings slides and tightens the connection. The cones are self-locking and will not loosen by itself if the screws are loosened if it is operated properly.

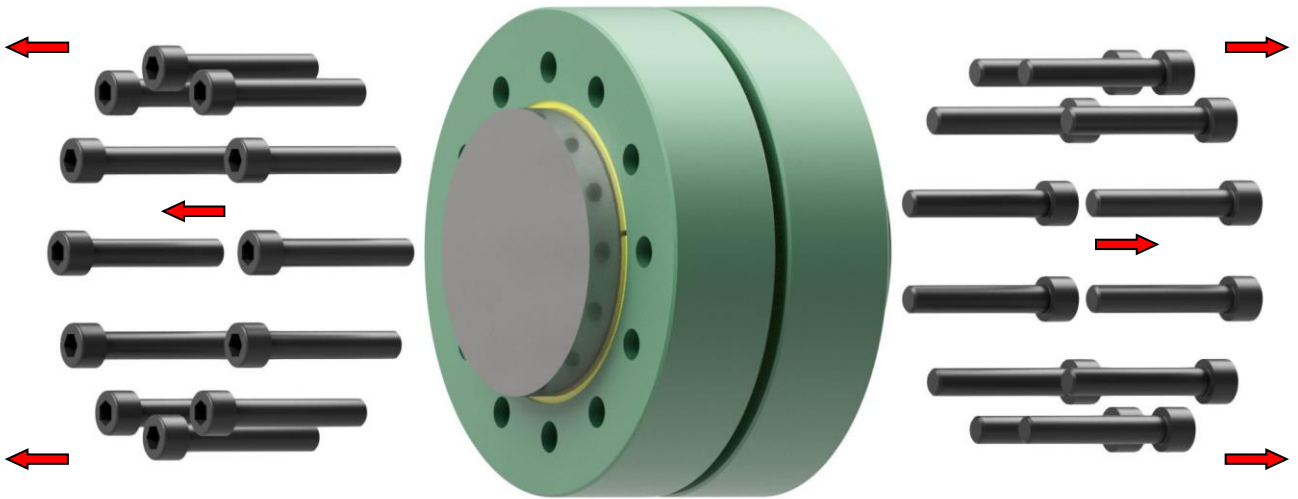
The shaft end does not move in the axial direction during assembly.



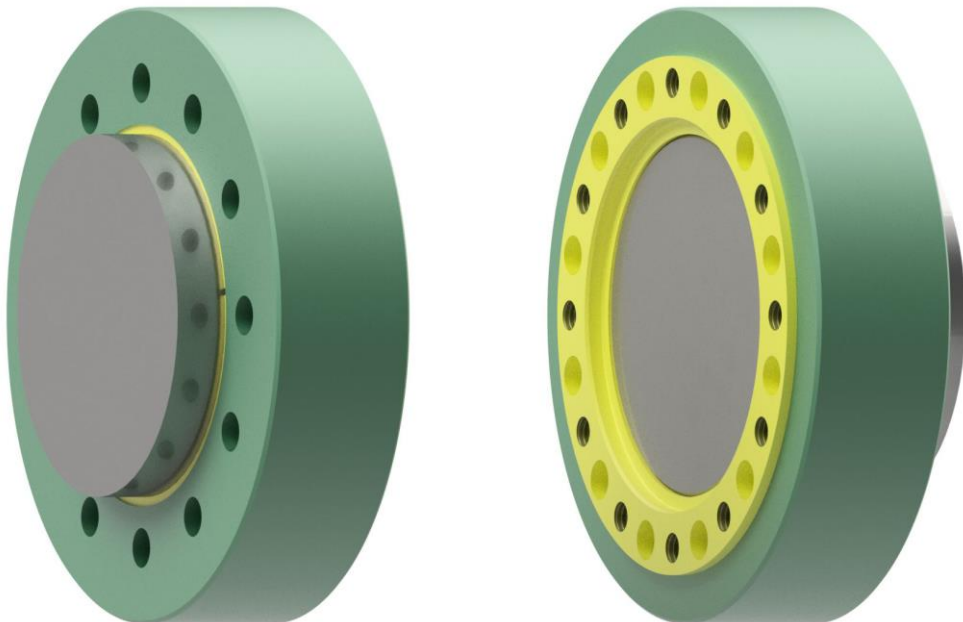
The shaft coupling is maintenance-free.

Removal

1. Unscrew all screws to loosen the connection.



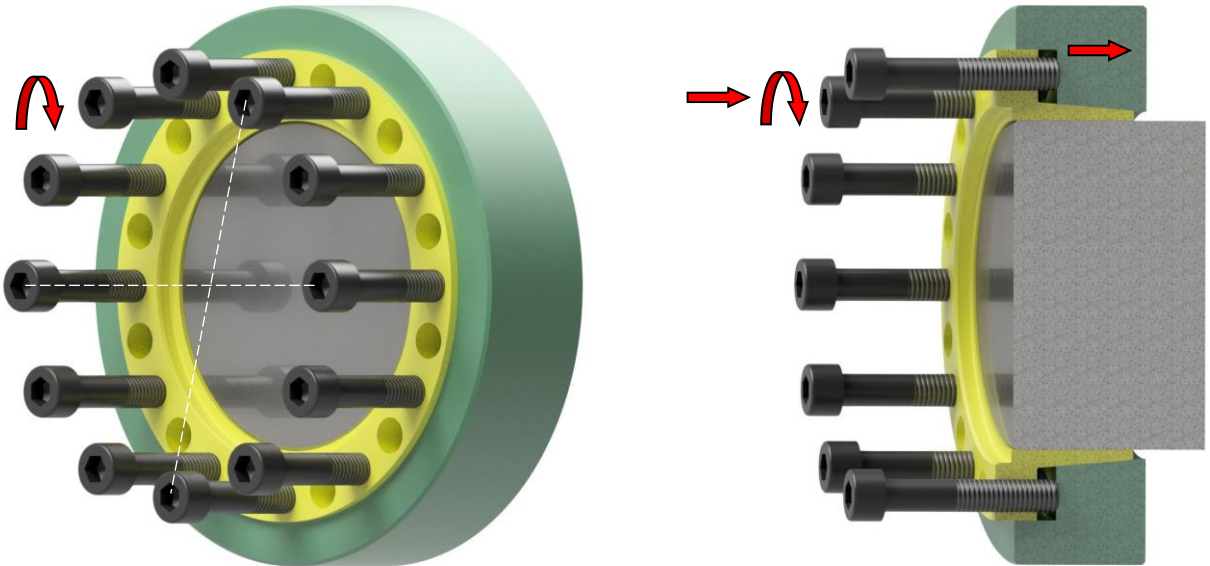
2. The coupling halves remain clamped on the shaft ends (self-locking cones).



Removal

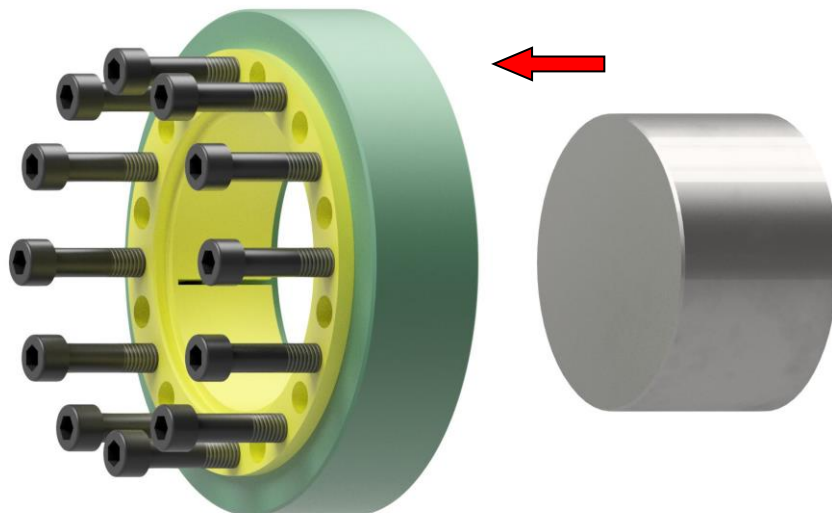
3.

Oil the screws and screw them into the release threads and tighten them crosswise with a torque wrench until the outer ring come loose from the inner ring.
(grind the release screws flat on the face side before screwing them in)



4.

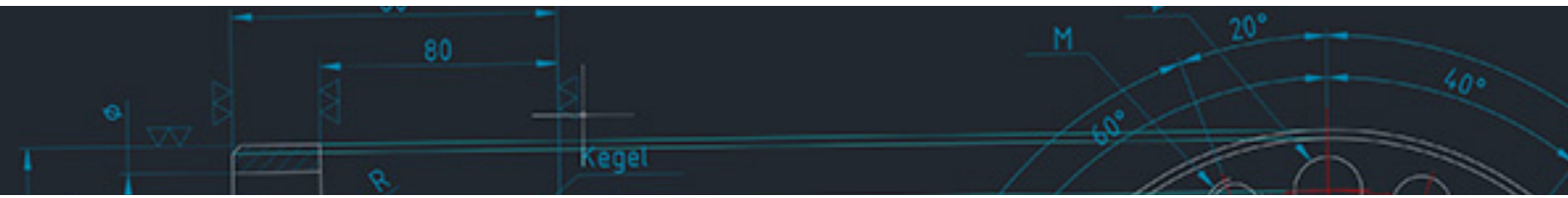
Remove the shaft coupling halves from the shaft ends.



Reusability

Undamaged locking assemblies can be reused.

The screws must be changed after each use!



BIKON-Technik GmbH

Hansemannstrasse 11

41468 Neuss • Germany

Tel. ++49 (0) 2131-71889-0

www.bikon.de

E-Mail info@bikon.de