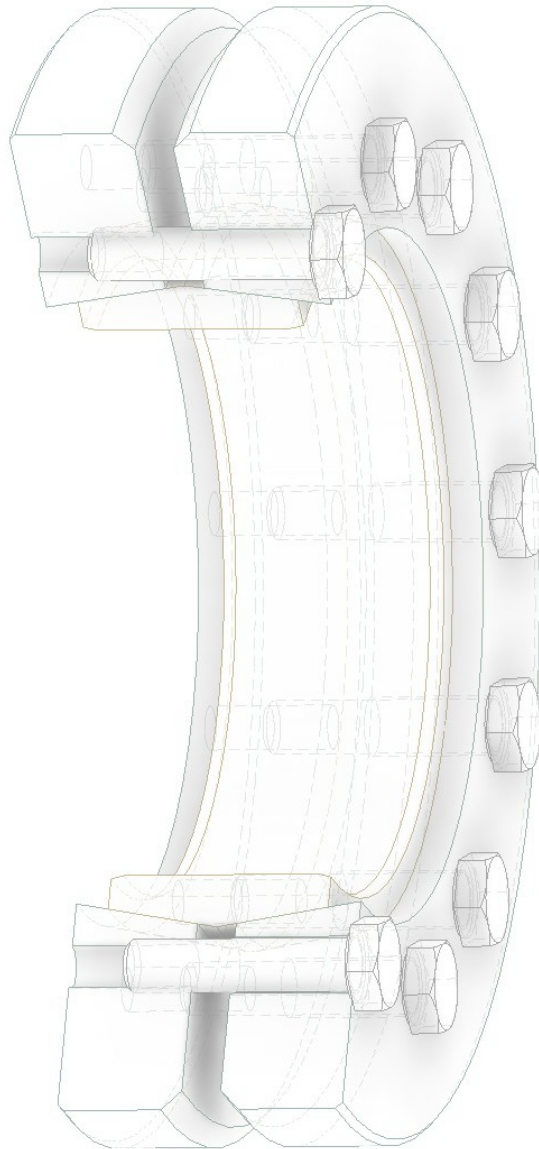


BIKON 1029
Installation Manual



Only available from BIKON-Technik GmbH • 41468 Neuss • Germany

Index:

We reserve all rights with regard to this technical data and its content. Without our prior written approval it is not allowed to duplicate this technical data or parts of it, nor to grant access to it by third parties or to exploit it otherwise (including extracts) without authority.

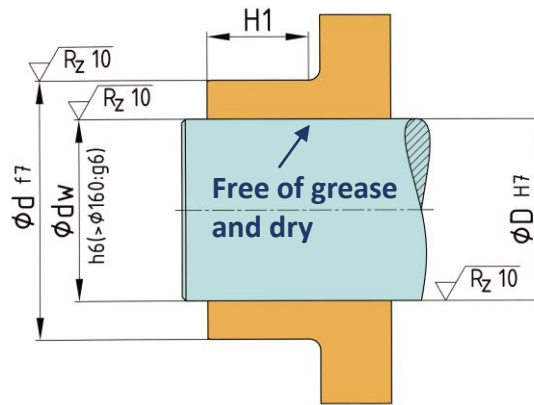
All topics and specification dealt with are only valid for original „BIKON“ or „DOBIKON“ products.

We will not accept any liability for damages arising from misinterpretation, application or constructional flaws (regarding equipment wherein our products shall be installed). All information is based upon our knowledge of the current state of the art at the draft date of this technical data.

We refer to our trademark and further intellectual property rights as well as our conditions of sale that shall apply.

April 2023

Space - BIKON 1029



d	D	H1	d	D	H1	d	D	H1	d	D	H1
mm	mm	mm	mm	mm	mm	mm	mm	mm	mm	mm	mm
24	50	18	115	200	50	195	350	85	350	580	160
30	60	20	120	200	50	200	350	85	360	590	160
36	72	22	125	215	52	210	370	104	370	645	164
44	80	24	130	215	52	220	370	104	380	645	164
50	90	26	135	230	58	230	405	108	390	660	164
55	100	29	140	230	58	240	405	108	400	690	184
62	110	29	145	263	62	250	430	119	410	690	184
68	115	29	150	263	62	260	430	119	420	690	184
75	138	31	155	263	62	270	460	132	430	750	192
80	145	31	160	290	68	280	460	132	440	750	192
85	155	38	165	290	68	290	485	140	450	770	192
90	155	38	170	300	68	300	485	140	460	770	192
95	170	44	175	300	68	310	520	140	470	800	213
100	170	44	180	330	85	320	520	140	480	800	213
105	185	49	185	330	85	330	570	156	490	850	213
110	185	49	190	350	85	340	570	156	500	850	213

TA – Tightening torque of screws

d	M	TA	d	M	TA	d	M	TA	d	M	TA
mm	-	Nm	mm	-	Nm	mm	-	Nm	mm	-	Nm
24	M5	4	115	M10	58	195	M16	240	350	M20	470
30	M5	4	120	M10	58	200	M16	240	360	M20	470
36	M6	12	125	M10	58	210	M16	240	370	M24	820
44	M6	12	130	M10	58	220	M16	240	380	M24	820
50	M6	12	135	M12	100	230	M20	470	390	M24	820
55	M6	12	140	M12	100	240	M20	470	400	M24	820
62	M6	12	145	M12	100	250	M20	470	410	M24	820
68	M6	12	150	M12	100	260	M20	470	420	M24	820
75	M8	29	155	M12	100	270	M20	470	430	M24	820
80	M8	29	160	M16	240	280	M20	470	440	M24	820
85	M8	29	165	M16	240	290	M20	470	450	M24	820
90	M8	29	170	M16	240	300	M20	470	460	M24	820
95	M8	29	175	M16	240	310	M20	470	470	M24	820
100	M8	29	180	M16	240	320	M20	470	480	M24	820
105	M10	58	185	M16	240	330	M20	470	490	M27	1 100
110	M10	58	190	M16	240	340	M20	470	500	M27	1 100

Installation

1.

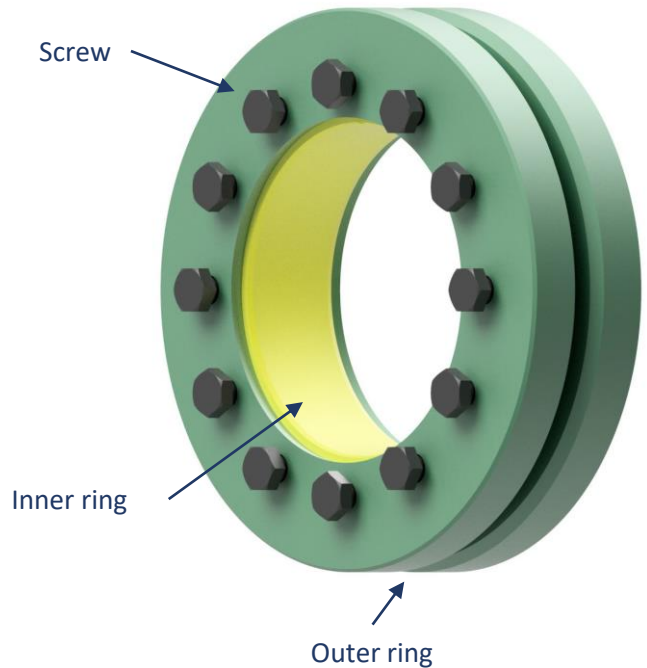
BIKON 1029 are delivered ready for installation.

The screws and cones are lubricated with Molykote (MoS₂).

The screws have been unscrewed a few threads.

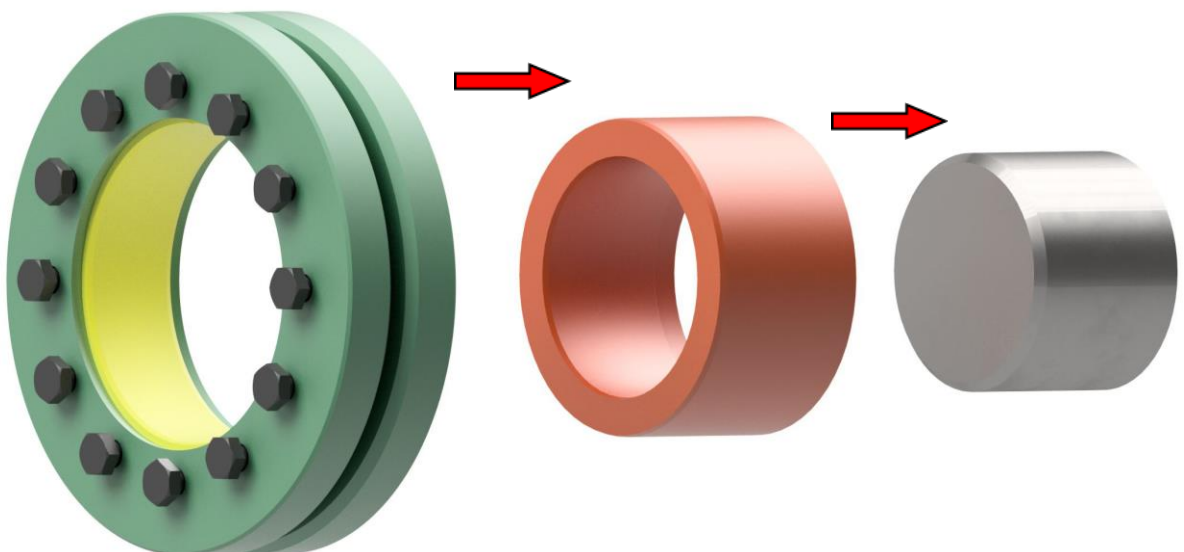
Make sure that the rings fit loosely on top of each other.

The cones are not self-locking.

**2.**

Join the shaft and inner bore of the hub dry and free of grease.
Slide the shrink disk (oiled) onto the hub.

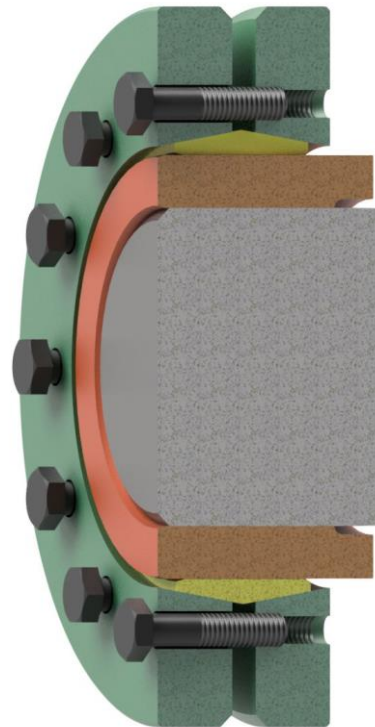
(The joint between the hub and the inner ring of the shrink disk can be oiled.)



Installation

3.

The hub and shrink disc must not protrude over the shaft.
Minimum flush fit required.



4.

Tighten the screws evenly one after the other using a torque wrench (not crosswise).

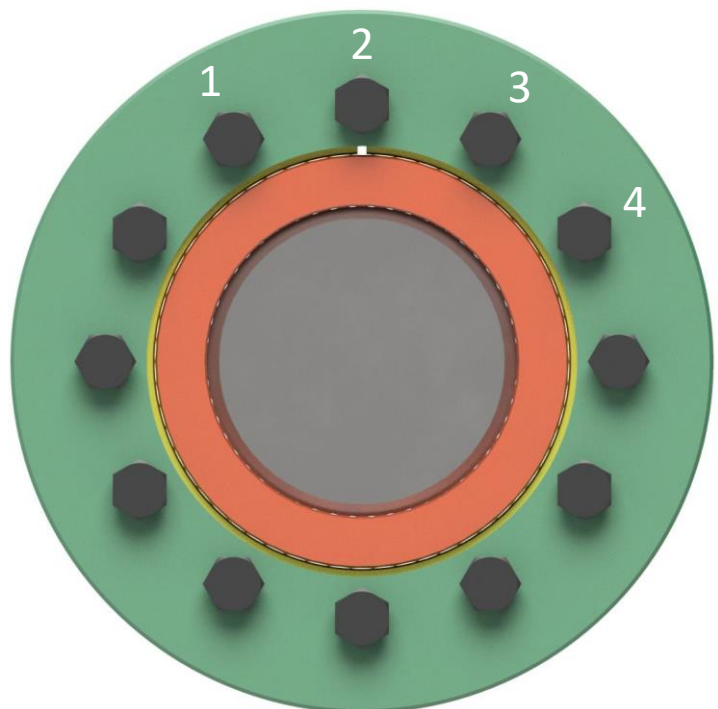
Pay attention to parallel outer rings, avoid tilt. A tightening angle of 30° - 60° has proven practical.

control !

The tightening of the screws and the assembly is complete when no more screws can be tightened with the 100% tightening torque.

Attention !

Do not clamp a shrink disc without an installed shaft, otherwise plastic deformation of the hub is possible.

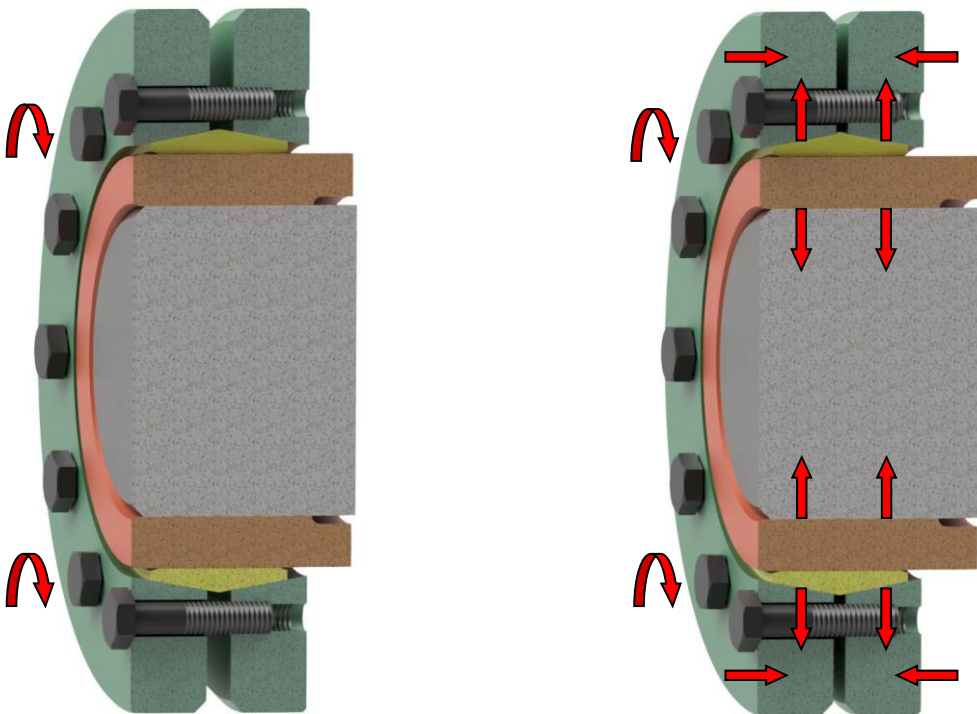


Installation

5.

By tightening the screws, the outer rings slides and tightens the connection. The cones are not self-locking

The hub does not move in the axial direction during assembly.



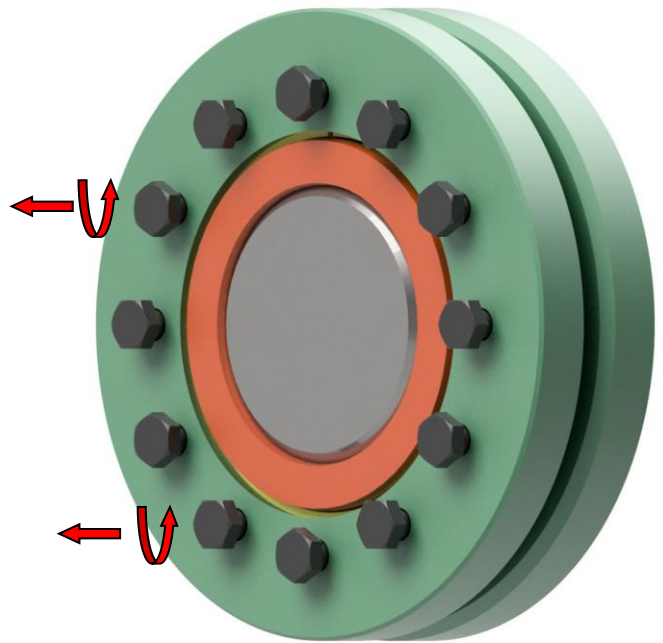
The shrink disk is maintenance-free.

Removal

1.

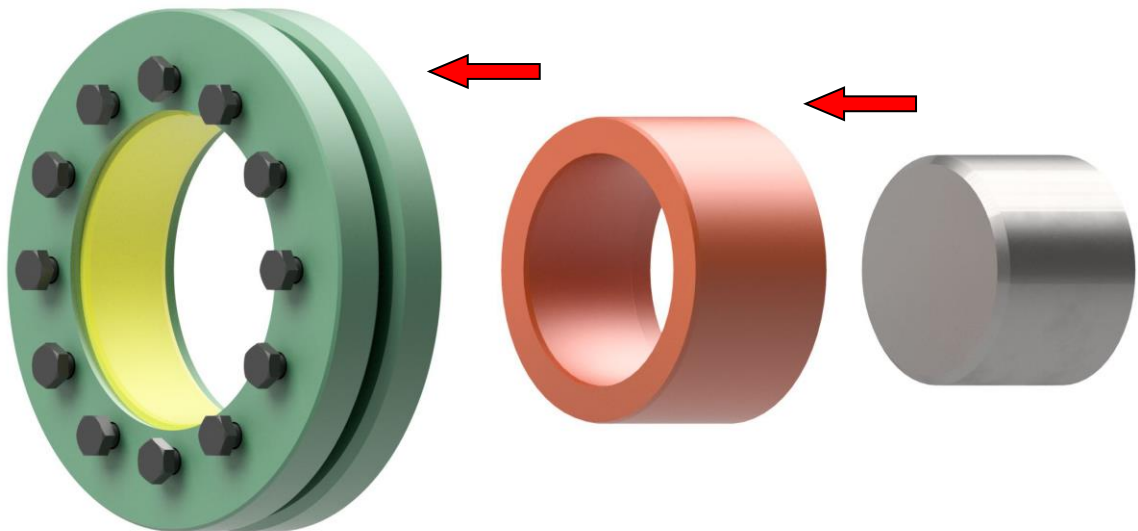
Loosen all screws evenly one after the other.
Several turns are necessary until all screws are loosened.
Do not unscrew the screws completely.

The cones are not self-locking and loosen when the screws are released.



2.

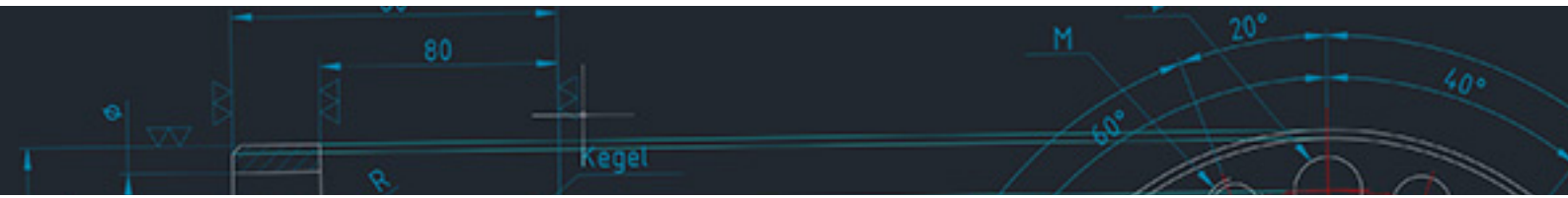
Remove the shrink disk from the hub and the hub from the shaft.



Reusability

Undamaged locking assemblies can be reused.

The screws must be changed after each use!



BIKON-Technik GmbH

Hansemannstrasse 11

41468 Neuss • Germany

Tel. ++49 (0) 2131-71889-0

www.bikon.de

E-Mail info@bikon.de